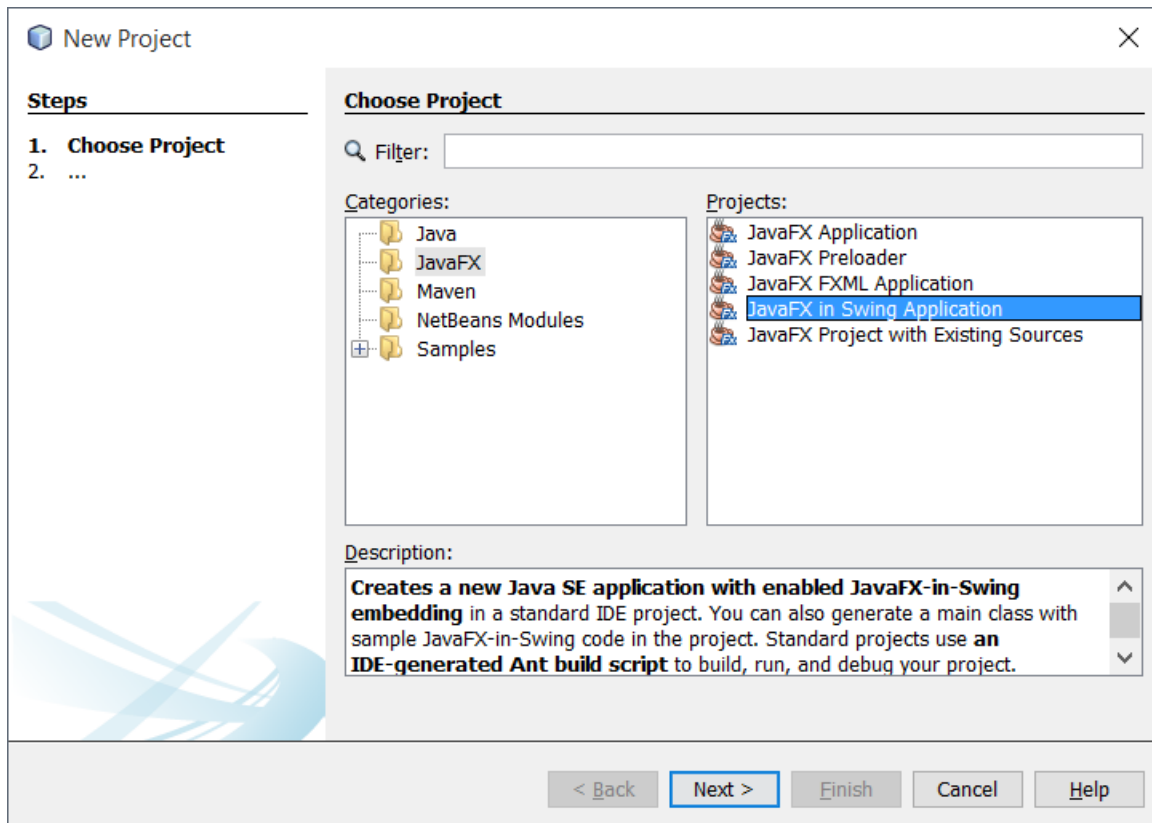
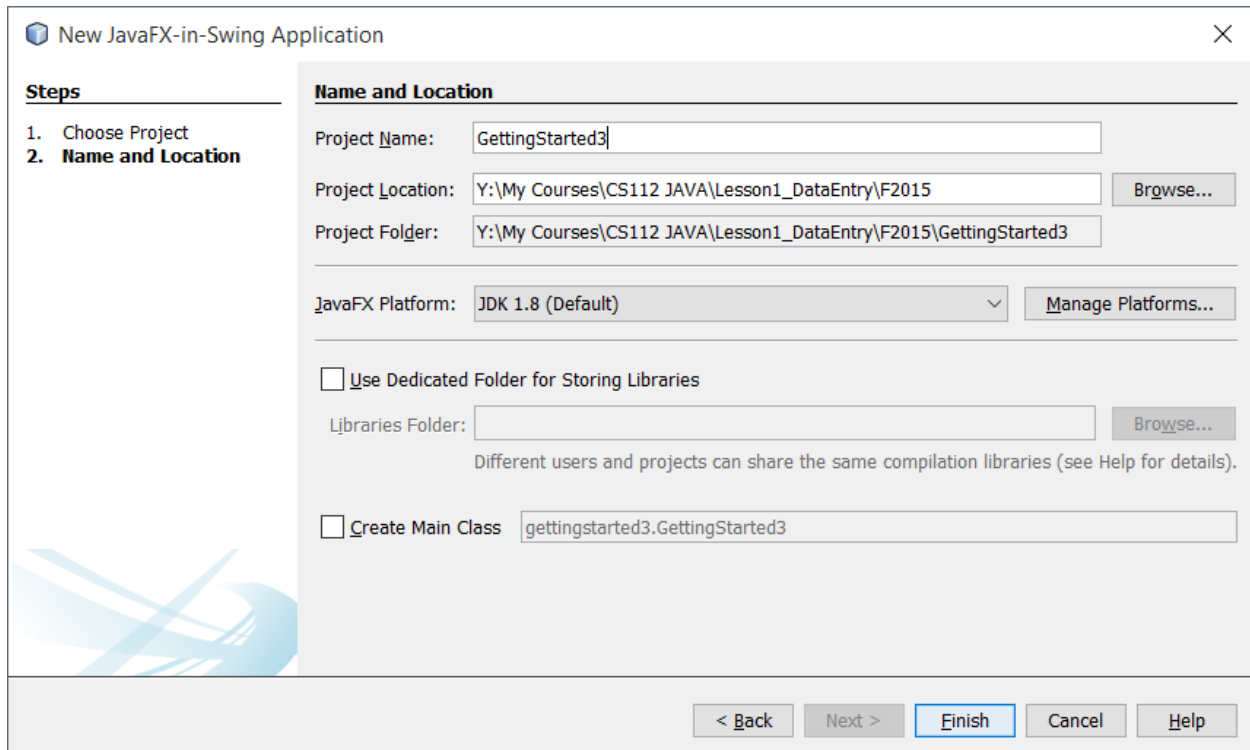


JAVA Create new Project.

STEP 1

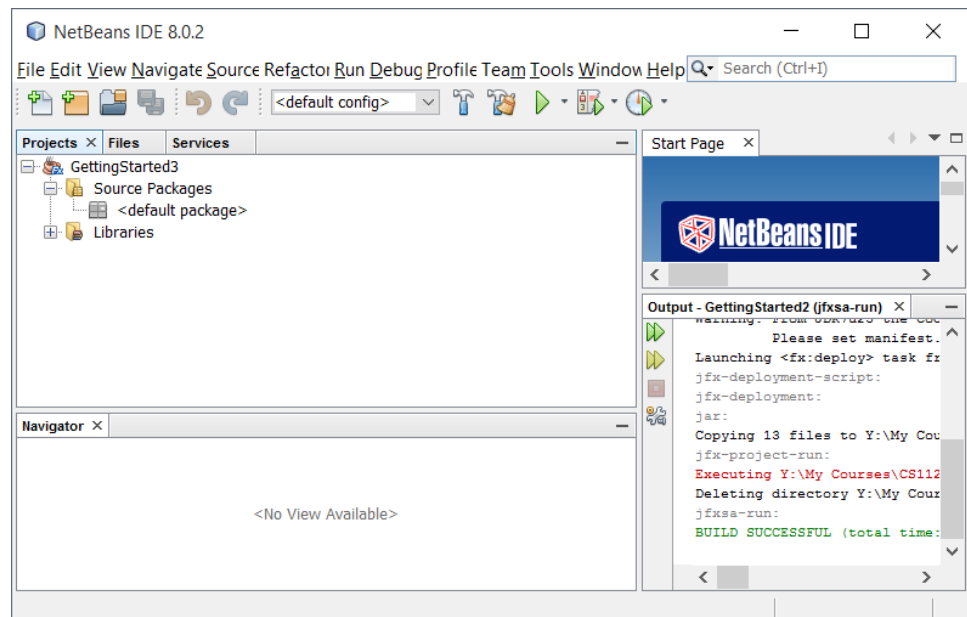


Step 2 Name project. DO NOT CREATE A MAIN CLASS!



Step 3

Add new JFrame Form under Source Packages.



STEP 4 Name your form and create a new package to hold it. Do not use the default package.

**New JFrame Form** [X]

**Steps**

1. Choose File Type
- 2. Name and Location**

**Name and Location**

Class Name: frmMain

Project: GettingStarted3

Location: Source Packages

Package: RK

Created File: rses\CS112 JAVA\Lesson1\_DataEntry\F2015\GettingStarted3\src\RK\frmMain.java

< Back   Next >   **Finish**   Cancel   Help

## STEP 5: Double-click your .java form and add controls!

The screenshot shows the NetBeans IDE 8.0.2 interface. The main window is titled "GettingStarted3 - NetBeans IDE 8.0.2". The menu bar includes File, Edit, View, Navigate, Source, Refactor, Run, Debug, Profile, Team, Tools, Window, and Help. The toolbar shows various icons for file operations and running. The left sidebar contains the "Projects" and "Files" views, showing a project named "GettingStarted3" with a source package "RK" and a file "frmMain.java". Below this is the "Other Components" view, showing a form named "frmMain" with several components: jButton1 [JButton], jCheckBox1 [JCheckBox], jCheckBox2 [JCheckBox], jRadioButton1 [JRadioButton], and jRadioButton2 [JRadioButton].

The central design view shows a form with the following components: jButton1, jCheckBox2, jCheckBox1, jRadioButton1, and jRadioButton2. A tooltip message reads: "Use the ButtonGroup component and the buttonGroup property to create a group of exclusive JRadioButtons." The jRadioButton1 and jRadioButton2 components are highlighted with a yellow border.

The right sidebar contains the "Palette" view, showing a list of Swing Containers and Swing Controls. The Swing Controls section includes: Label, Toggle Button, Radio Button, Combo Box, Text Field, Button, Check Box, Button Group, List, and Text Area. Below the palette is the "Properties" view for the selected component, "jRadioButton2 [JRadioButton]". The Properties view has tabs for Properties, Binding, Events, and Code. The Properties tab is active, showing the following properties:

Property	Value
action	<none>
background	[240,240,240]
model	<default>
buttonGroup	<none>
font	Tahoma 13 Plain
foreground	[0,0,0]
mnemonic	

The bottom of the IDE shows the "Output" view, which is currently empty. The status bar at the bottom right indicates "INS".