

Sample Building Plans for Attaching Ultrasonic Sensor

Building Instructions: Ultrasonic Sensor - Windows Internet Explorer

Ultrasonic Sensor 1 2 3 4 5 6 7 BACK NEXT

Ultrasonic Sensor

Attachment Instructions



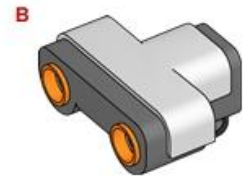
The image shows a LEGO Technic robot with a grey and white ultrasonic sensor mounted on its front. The sensor is connected to the robot's internal wiring. The robot has a large black tire on the right side and a smaller one on the left. The sensor has a green display screen and several buttons. The text 'NXT' is visible on the side of the sensor. The entire scene is framed by a blue border, representing a web browser window.

Materials

Parts Page 1

- (A) 1x Assembled Taskbot
- (B) 1x Ultrasonic Sensor
- (C) 1x 2-Module Cross Block
- (D) 1x 3-Module Connector Peg with Friction
- (E) 2x 3-Module Axle
- (F) 1x Cable

(A) = Part Number
1x = Amount Needed

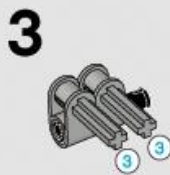
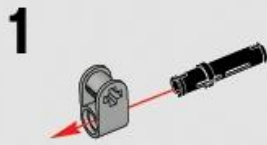
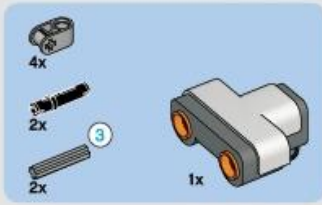




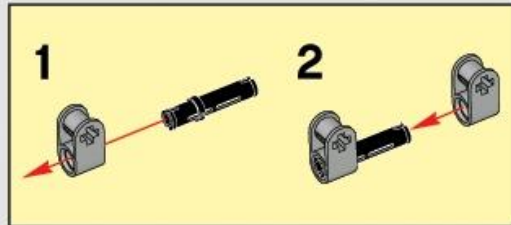
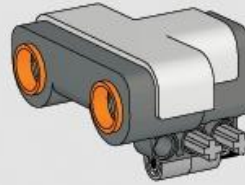
Ultrasonic Sensor

- 1
- 2
- 3
- 4
- 5
- 6
- 7

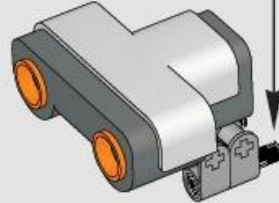
BACK NEXT



4



5

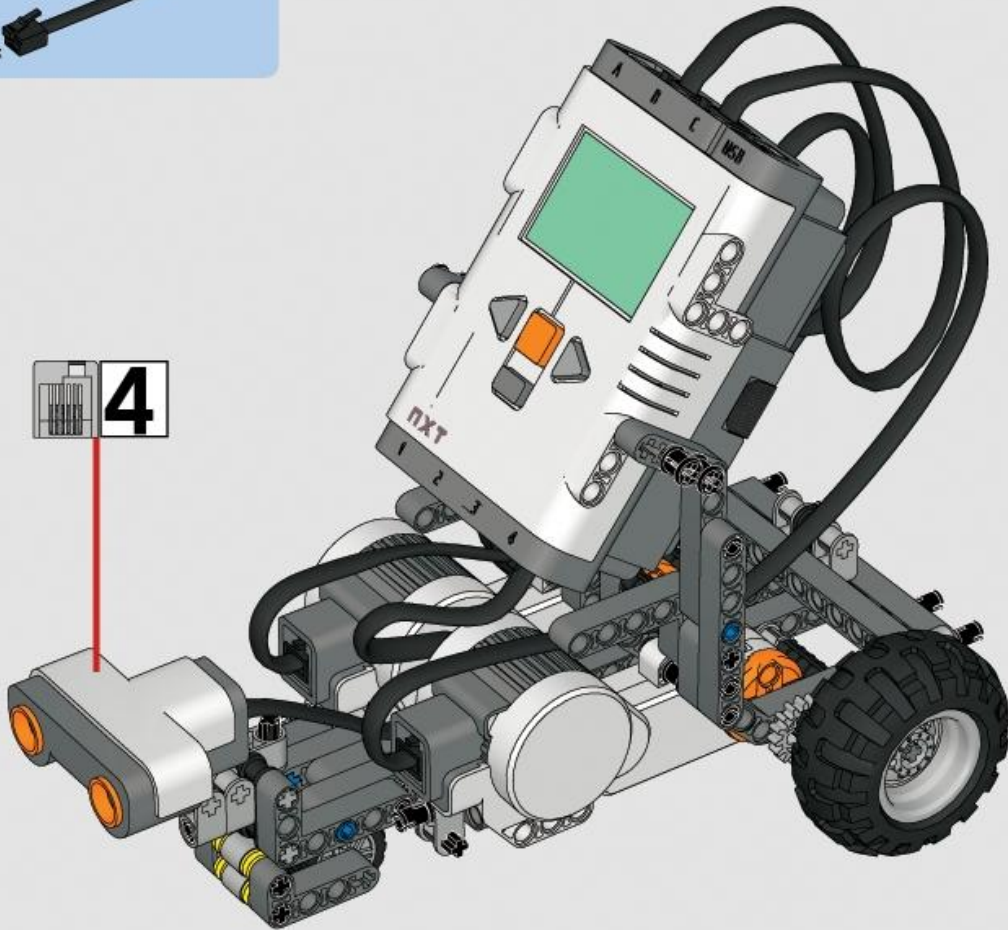




Ultrasonic Sensor

- 1
- 2
- 3
- 4
- 5
- 6
- 7

BACK NEXT



Your **Ultrasonic Sensor Attachment** is now complete!

